



KM-5050/4050

Document Imaging Solutions

SERIOUS BUSINESS.
SERIOUS OUTPUT.™



 **KYOCERA**

WORKING OVERTIME
TO DELIVER RESULTS

KM-5050/4050



HIGH PERFORMANCE IMAGING SOLUTIONS THAT WORK OVERTIME TO DELIVER RESULTS. INTRODUCING A NEW GENERATION OF IMAGING SOLUTIONS DESIGNED TO DELIVER THE HIGH PERFORMANCE AND PRODUCTIVITY TODAY'S WORKGROUPS DEMAND - THE KYOCERA KM-5050 AND KM-4050. A FULL COMPLEMENT OF STANDARD MULTIFUNCTIONAL FEATURES ALLOW USERS TOTAL ACCESS TO PRINT, SCAN, COPY AND OPTIONAL FAX CAPABILITIES ACROSS THE NETWORK.

KM-5050/4050 HIGHLIGHTS

- ▶ Fast Output Speeds of 50 or 40 pages per minute
- ▶ Standard Network Printing
- ▶ Standard Color Scanning
- ▶ Single Board Multi-Task Architecture
- ▶ Standard 512MB RAM and 40GB HDD
- ▶ Standard 1,200-Sheet Paper Supply
- ▶ Standard Duplex
- ▶ Color Touch Screen Interface
- ▶ Optional 100-Sheet Dual Scan Document Processor
- ▶ Optional Paper Handling and Advanced Finishing
- ▶ Optional Fax and Network Fax
- ▶ Optional KYOCapture Express, iTag and KYOCapture Solutions
- ▶ Kyocera Long Life Consumables

Designed to optimize IT and business performance, the KM-5050 and KM-4050 combine product features and functionality with Kyocera's innovative software solutions to improve workflow for all networked environments. From the MFP or the desktop, these innovative solutions provide administrators the tools to control business processes, and gives users an easy to use solution with the flexibility to create exceptional output **the first time and every time**. Kyocera's single board architecture allows **true Multi-Task capabilities** across every function of the MFP, **enhancing productivity** in the workgroup and business performance within the company. In addition, add a new level of **security enhancements** and options to the mix and the KM-5050 and KM-4050 are the **clear choice for the business**.

With the KM-5050 and KM-4050, Kyocera pays close attention to your bottom line as well. **Long life components** and **award-winning reliability** mean lower maintenance costs. Combined with versatility and improved performance for business environments, this can translate into significant cost savings, **over the life of your MFPs**.

With businesses continuing to raise their expectations with fast document processing and document management, Kyocera Multifunctionals rise to the challenge.



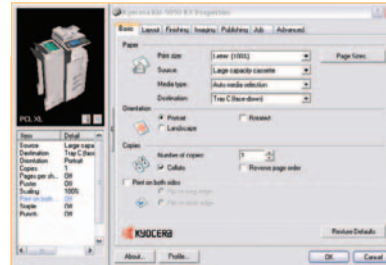
ALL THE TOOLS YOU NEED FOR EXCEPTIONAL OUTPUT ACROSS THE NETWORK

The KM-5050 and KM-4050 are designed to measure up to the most demanding print-intensive environments. A powerful 600 MHz processor combines with standard 512MB RAM that can be upgraded to 1GB for even greater performance. The standard **40GB Hard Disk Drive** (HDD) provides the memory needed for workgroups requiring true document printing, and allows users to store critical documents at the device.

When it comes to output, the KM-5050 and KM-4050 deliver print speeds of up to 50 pages per minute, with 600 x 600 resolution in 256 levels of greyscale, while supporting environments including Windows®, Mac, Novell®, UNIX and Linux. Kyocera's intelligent print solutions, designed to facilitate improved performance like **PDF Direct Print**, assist businesses with the critical printing workflow they require. Intuitive and user-friendly, they offer an easy to navigate interface that allows users to control output and process jobs more quickly and efficiently.

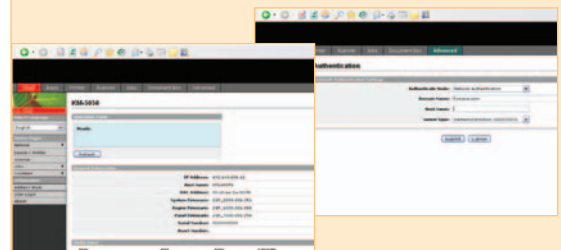
Kyocera's advanced **KX Driver** allows users to take full advantage of the unique features integrated in the KM-5050 and KM-4050. Workgroup users can specify paper handling, including duplex, staple and hole-punch documents, create booklets with covers and inserts, and deliver documents to Kyocera's new **Document Box** for secure output. Administrators benefit from the simplicity of managing the KX Driver with its single user interface regardless of Kyocera device, page description language or Windows® environment. The **KM-NET** suite of software, tools and utilities provides additional capabilities for network and device management. KM-NET simplifies a wide range of network administration functions including device monitoring, diagnostics, and accounting in a secured environment.

Kyocera's **PRESCRIBE** capabilities add flexibility with a unique printing solution. Deploying a PRESCRIBE solution can significantly reduce a company's overall print costs, eliminating the need for pre-printed forms and letterhead, or assisting in complex printing applications that are critical to any businesses processes and workflow.



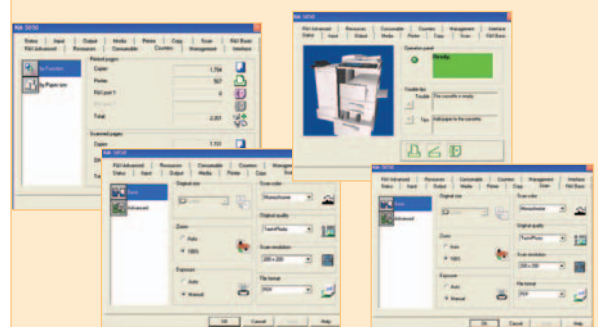
KX DRIVER

With a common user interface across all Kyocera multifunctionals, the KX Driver allows total control over all features while simplifying both set-up and use.



KYOCERA COMMAND CENTER

Manage individual devices through this intuitive web-based portal to set security levels, protocols, filters and device defaults in an easy to navigate interface.



KM-NET VIEWER

Providing centralized network device management of all connected printers and copiers/MFPs, KM-NET Viewer reduces the administrative burden and allows businesses to respond to issues in real-time.

WORKING OVERTIME
TO DELIVER RESULTS

KM-5050/405

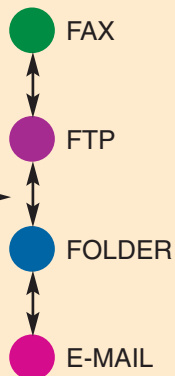


COLOR AND BLACK & WHITE SCANNING OFFERS INCREASED FLEXIBILITY

Resolution up to 600 dpi enables crisp, clear images for file sharing, document storage and archiving, or importing into other documents.



Scan
Once



MULTI-SEND IMPROVES PERFORMANCE

Kyocera's new Multi-Send feature allows users to send documents to e-Mail destinations, FTP and Network Folders, and fax numbers from a single scan, improving productivity and performance.

IMPROVE DOCUMENT SHARING WITH COLOR AND BLACK & WHITE SCANNING

The ability to scan and deliver documents productively is essential in today's global business. Kyocera's single board architecture provides users with the ability to Scan and Send documents more efficiently with our new Multi-Send feature. With **Multi-Send**, documents can be delivered to an e-Mail address, FTP destination, network folder and facsimile machine from a single scan, impacting overall business productivity and performance significantly.

The KM-5050 and KM-4050 scan black and white documents at 50 originals per minute (OPM), and color documents at an impressive 25 OPM via the **Dual Scan Document Processor**. Scanning resolution can be selected at the point of need, at resolutions up to 600 dpi, without any loss in scanning speed.

Kyocera's standard scanning functions include:

- ▶ **Scan to e-Mail** – Documents can be scanned to any e-Mail destination from the Consolidated Address Book, utilizing the built-in LDAP feature or using a QWERTY keyboard from the Color Touch Screen.
- ▶ **Scan to Folder** – Documents can be scanned to a shared network folder on a server using SMB (Server Message Block) protocol, simplifying network management and document sharing across operating systems and platforms.
- ▶ **Scan to FTP** - FTP (File Transfer Protocol) is an efficient and effective way for customers to share files, especially the larger file sizes created when scanning in color. FTP security ensures integrity between the file sender and recipient.

Scanning is TWAIN compliant, and file formats are extremely versatile. Documents can be saved and sent as a TIFF or PDF in black and white, and JPG, TIFF or PDF in color, ensuring the right file type depending on the application.

For companies interested in Security and Compliance, Kyocera's UG-30 PDF Enhancement Kit option is a critical component for scanning. The PDF Enhancement Kit supports up to 128bit PDF Encryption for secure communication and PDF Compression to reduce file sizes when scanning documents in color.



COLOR TOUCH SCREEN

Easily access all functions from this user-friendly interface. Animated Help Guidance makes setting selection simple for even first-time users.



100-SHEET DUAL SCAN DOCUMENT PROCESSOR

Jump start processing speed and input time. At 50 Originals per Minute, users can output copies of multiple originals on demand, quickly and accurately.



EXCEPTIONAL PAPER HANDLING

With a 4,200-sheet maximum capacity, the KM-5050 and KM-4050 enable users to switch paper sizes and types at the touch of a button, either from the device or from the desktop.

HIGH PERFORMANCE, EASY TO USE AND INCREDIBLY RELIABLE

When it comes to copying capabilities, the KM-5050 and KM-4050 feature all the standard features and functionality a workgroup needs to meet their most demanding copy requirements, as well as a host of finishing and paper handling options that offer the ability to tailor the product to your unique requirements.

The KM-5050 and KM-4050 both incorporate an easy to navigate **Color Touch Screen**, which can be adjusted for Section 508 Compliance. The Color Touch Screen allows access to every function, and also features an animated Help Guidance to assist users with job settings to complete any task.

For serious copying and scanning, the KM-5050 and KM-4050 can be configured with an optional Dual Scan Document Processor. In copy mode, the Document Processor can hold up to 100 Sheets and process pages at 50 OPM.

Standard features includes 6 imaging modes, paper tray select, up to 999 continuous copy capabilities, duplex, 25-400% reproduction and 5 reduction and enlargement pre-sets, image reverse/rotate, page numbering, auto-centering, erase mode, and 1,000 management codes.

Standard paper capacity is 1,200 sheets via three sources. An optional **3,000 sheet large capacity tray** or **dual paper drawers** can be added, allowing workgroups to take advantage of an impressive maximum paper capacity of 4,200-sheets. A variety of paper weights and sizes can be accommodated, allowing users to create various types of output, from postcards to newsletters, on paper weights ranging from 16 lb bond to 110 lb index.

In addition to paper handling options, the KM-5050 and KM-4050 can be configured with **versatile finishing options**, designed to improve document output. These finishers include a **Multi Finisher** that can staple and hole-punch, create Saddle Stitched, folded booklets, and deliver documents directly to a mailbox unit for busy workgroups.

WORKING OVERTIME
TO DELIVER RESULTS

KM-5050/4050

DOCUMENT BOX

With the KM-5050 and KM-4050 MFP, document storage becomes an important component to the complete solution that these products deliver to the workgroup. Kyocera's new **Document Box** function provides a versatile way to store, secure and access critical documents and data at the device, improving the turnaround time to access and speed to output this essential data.

Document Box is a Kyocera solution created to **improve user productivity** and performance in the workgroup by consolidating and facilitating the management of electronic documents. Standard in the KM-5050 and KM-4050, Document Box enables users to save scanned or printed documents to a specified Box on the MFP, for easy retrieval and processing directly from the Color Touch Screen Interface.

VERSATILE SENDING SOLUTIONS FOR THE BUSY WORKGROUP

The KM-5050 and KM-4050 offer advantages to the workgroup with an **optional Fax/Network Fax** system that eliminates the need for a standalone facsimile. Standard G3 capabilities enable users to fax documents from either the MFP or the convenience of their desktop. Combined with the Multi-Send scanning feature, document delivery has never been easier. The optional Fax utilizes the Consolidated Address Book for storing up to 2,000 destinations, easily searched from the Color Touch Screen.

Quick scanning speeds from the Dual Scan Document Processor combine with fast transmission speeds of approximately 3 seconds per page and modem speeds of 33.6 Kbps, to help critical documents reach their intended destination quickly. Documents can be received as hardcopy at the MFP, or delivered electronically to a Network Folder, contributing to an overall cost savings in any environment.

DOCUMENT BOX

Four distinct types of **Document Boxes** allow for maximum functionality in a controlled setting:

- ▶ **CUSTOM BOX** – Can be allocated for individuals and groups, for temporary storing and sharing information. When users register individually, User Box can be used as an effective private box. It can also save scanned color images.
- ▶ **JOB BOX** – Used to store and output a specific job from a selected application such as Repeat Copy or Private Print.
- ▶ **MEDIA BOX** – Works in conjunction with the USB Host function. PDF data can be printed directly from a USB Flash Drive, and is a critical feature for customers who are interested in a high level of confidentiality and security.
- ▶ **FAX BOX** – Can save fax documents, which are received by facsimile communication. Fax Box can also be used for F-code Subaddress confidential reception. (Fax option required).



USB HOST PRINTING

With Kyocera's innovative USB Host Printing, users can install a flash drive at the control panel and print their PDF documents directly from the Touch Screen Interface.

SCAN & FAX / NETWORK FAX / NETWORK & SOLUTIONS

SECTION 508 COMPLIANCE

The KM-5050 and KM-4050 offer a wide array of accessibility features:

- ▶ **Color Touch Screen** – Adjustable color settings make screen viewing easier for those users who are visually impaired
- ▶ **Tilttable Control Panel** – Allows for easy viewing when seated
- ▶ **Easy View Numbers** – Numbers around the platen frame are enlarged and printed using high contrast colors for added visibility

iTAG DOCUMENT MANAGEMENT SOLUTION

Every company has at least one business critical document, but storing it can be a challenge. With the optional iTag Document Management

Solution this challenge is eliminated. All inclusive, iTag comes standard with everything you need to effectively start managing your critical documents immediately. The iTag Solution ships with the iTag Validation Station, a powerful Dell™ server preloaded with the iTag software, Microsoft Windows® SharePoint Services, and one MFP device connection for out-of-the-box functionality.



KYOCAPTURE TRANSFORMS THE DOCUMENT WORKFLOW PROCESS

KYOCapture is an advanced document capture workflow solution that utilizes select Kyocera MFPs to capture,

process, and route paper or electronic-based documents to existing or new document management systems. Available as an option, KYOCapture helps users boost productivity, lower their total cost of ownership, and manage their business workflow effectively and accurately.



CAPTURE > PROCESS > ROUTE

BRINGING UNPRECEDENTED DOCUMENT PRODUCTIVITY TO THE WORKGROUP

Standard Authentication

The KM-5050 and KM-4050 can provide workgroups and departments with standard **Network Authentication** supporting Windows® NT and Server 2000/2003 environments. Administrators can also set and manage Local Authentication at the device level if full Network Authentication is not required.

Security

The optional **Kyocera Data Security Kit (C)** offers a powerful solution for meeting the privacy demands of today's digital office environments by overwriting information stored in RAM during Copy, Print and Send functions. The Data Security Kit also supports encryption for documents stored on the standard 40GB HDD providing companies with a secure document solution.

iTag

iTag from Kyocera is an easy-to-use solution that enables businesses to jump-start their document management strategy without a complex implementation process. The **iTag Document Management Solution** was designed for the small business or department looking to capture, index, store and share all of their documents, using a Kyocera MFP as the scanning device, and Microsoft Windows® SharePoint Services to archive and share the documents.

KYOCapture Powered by AutoStore

This server-based **Document Capture Workflow Solution** allows businesses to seamlessly capture paper-based documents for processing and routing to multiple workflows and locations. Integrating with existing or new document management systems, KYOCapture functions as a portal through which documents are captured, processed and routed. By utilizing the same MFPs already employed for printing and copying, Kyocera enables businesses to realize increased efficiencies in their document flow as well as related cost savings.

HIGH PERFORMANCE, EXCEPTIONAL RELIABILITY AND MAXIMUM SECURITY IN AN EASY-TO-USE SOLUTION MAKE THE KM-5050 AND KM-4050 THE UNDISPUTED MFPs OF CHOICE FOR TODAY'S BUSINESSES. PUT THEIR POWER AND VERSATILITY TO WORK FOR YOU.

KM-5050/4050 SPECIFICATIONS

BASIC SPECIFICATIONS:

Configuration:	Workgroup Multifunctionals with Standard Network Print/Color Scan System and optional Fax/Network Fax. Standard 500 x 2 Paper Drawers Plus 200 Sheet Multipurpose Tray. Standard Duplex. Optional Dual Scan Document Processor. Optional Finishing and Paper Handling.
Resolution:	600 x 600 DPI Resolution / 256 Levels, Fast 1200 Print Mode
System Memory:	Standard 512MB RAM, upgradeable to 1GB; Standard 80GB HDD
Magnification:	Full Size, 5 Reduction, 5 Enlargement Preset Ratios, Plus 25-400% Zoom
Electrical Requirements:	120V, 60Hz, 11.5A
Dimensions:	23.6"W x 25.4"D x 29.3"H
Weight:	188 lbs
Max Monthly Volume:	KM-5050 - 200,000 Pages Per Month KM-4050 - 150,000 Pages Per Month

OUTPUT SPEEDS:

Warm-Up Time:	Within 30 Seconds, Program During Warm-up
First Copy Out:	3.5 Seconds (KM-5050/4050)
Pages Per Minute:	KM-5050 - 50 Letter, 26 Legal, 26 Ledger KM-4050 - 40 Letter, 23 Legal, 23 Ledger

PAPER SUPPLY:

Standard Paper Sources:	Dual 500 Sheet Drawers, 200 Sheet MPT; Auto Tray Selection / Switching
Drawer Paper Size:	5.5" x 8.5" - 11" x 17"
MPT Paper Size:	5.5" x 8.5" - 11" x 17"
Std / Max Paper Capacity:	1,200 / 4,200
Paper Weight:	13-28 lb Bond via Paper Drawers, 13 lb Bond-110 lb Index via MPT
Input Materials:	Bond Paper, Recycled Paper, Transparencies, Labels, Envelopes

DUPLEX UNIT:

Duplex Type:	Standard Embedded Stackless
Paper Size:	5.5" x 8.5" - 11" x 17"
Paper Weight:	17 - 21 lb Bond
Duplex Modes:	Standard 1:2, 2:2, Book: 2, 2:1

COPY FUNCTIONS:

Control Panel:	Color Wide Touch Screen Interface
Imaging Modes:	Text, Photo, Text / Photo, Auto, Manual, ECO
Continuous Copy:	Up to 999, Auto Reset to 1
Document Box:	Custom Box, Job Box, Media Box, Fax Box (with optional Fax System)
Additional Features:	Network/Local Authentication, Auto Magnification and Paper Select, Job Build, Job Finish Notice, Status Queue, Continuous Scan, Combine Image, Covers, Erase Mode, Image Rotate, Image Reverse, Priority Print, 50 Job Programs, Margin Shift, Mirror Image, Page Numbering, Memo Mode, 1,000 Management Codes, XY Zoom, Auto Centering, Help Guidance, Preview Image

PAPER HANDLING OPTIONS:

DOCUMENT PROCESSOR: DP-700

Type:	Dual Scan Document Processor (DSDP)
Acceptable Originals:	5.5" x 8.5" - 11" x 17", Mixed Size Processing
Capacity:	100 Sheet DSDP / 50 Letter Size Originals Per Minute (Monochrome)
Paper Weight:	13 - 42 lb Bond
Dimensions / Weight:	22.4"W x 20.7"D x 5.9"H / 29 lbs

FINISHER: DF-710

Stack Capacity:	Main Tray (A): 3,000 Sheets; Sub Tray (B): 200 Sheets, Sub Tray (C): 50 Sheets
Paper Size:	Main Tray (A): 8.5" x 11" - 11" x 17"; Sub Tray (B) : 5.5" x 8.5" - 11" x 17"; Sub Tray (C) : 8.5" x 11", 5.5" x 8.5"
Paper Weight:	12 lb Bond - 110 lb Index
Staple Capacity:	50 Sheets: 8.5" x 11"; 30 Sheets: 8.5" x 14", 11" x 17"
Edge Staple Position:	3 Positions: Top Left, Bottom Left, Center Bind
Saddle Stitch / Fold:	Optional Booklet Folder
Punch:	Optional 2 and 3 Hole
Dimensions / Weight:	26.9"W x 22.2"D x 42.8"H / 121 lbs

MULTI-TRAY: MT-710

Number of Trays:	7
Tray Capacity:	100 Sheets: 5.5" x 8.5", 8.5" x 11"; 50 Sheets: 8.5" x 14", 11" x 17"
Paper Weight:	17 - 21 lb Bond
Dimensions / Weight:	20.1"W x 15.7"D x 18.5"H / 22 lbs

PUNCH UNIT: PH-5A

Paper Size:	8.5" x 11" - 11" x 17"
Paper Weight:	17 lb Bond - 110 lb Index
Number of Holes:	2 and 3
Weight:	6.6 lbs

BOOKLET FOLDER: BF-710

Folding Capacity:	1 - 16 Sheets
Stack Capacity:	1-5 Sheets - 30 Booklets; 6-9 Sheets - 20 Booklets; 10-16 Sheets - 10 Booklets
Paper Size:	8.5" x 11", 8.5" x 14", 11" x 17"
Paper Weight:	16 lb Bond - 110 lb Index, Over 20 lb is one sheet only
Dimensions / Weight:	25.7"W x 17.9"D x 10.5"H / 46.3 lbs

SIMPLE FINISHER: DF-730

Stack Capacity:	8.5" x 11" - 1,000 Sheets; 8.5" x 14", 11" x 17" - 500 Sheets
Paper Size:	8.5" x 11" - 11" x 17"
Paper Weight:	17 - 34 lb Bond
Staple Capacity:	30 Sheets: 8.5" x 11"; 20 Sheets: 8.5" x 14", 11" x 17"
Edge Staple Position:	1 Position: Top Left
Dimensions / Weight:	22.0"W x 20.7"D x 36.0"H / 55 lbs

INTERNAL FINISHER: DF-720

Stack Capacity:	8.5" x 11" - 500 Sheets; 8.5" x 14", 11" x 17" - 250 Sheets
Paper Size:	8.5" x 11" - 11" x 17"
Paper Weight:	16 lb - 28 lb Bond
Staple Capacity:	30 Sheets: 8.5" x 11"; 20 Sheets: 8.5" x 14", 11" x 17"
Edge Staple Position:	1 Position
Dimensions / Weight:	12.2"W x 16.1"D x 6.3"H / 19.8 lbs

LARGE CAPACITY TRAY: PF-750

Paper Capacity:	3,000 Sheets
Paper Weight:	16 - 28 lb Bond
Paper Size:	8.5" x 11"
Dimensions / Weight:	23.0"W x 23.6"D x 12.4"H / 50.7 lbs

DUAL PAPER DRAWERS: PF-700

Paper Capacity:	500 x 2 Sheets
Paper Weight:	16 - 28 lb Bond
Paper Size:	5.5" x 8.5" - 11" x 17"
Dimensions / Weight:	23.0"W x 23.2"D x 12.4"H / 57.3 lbs

CONNECTIVITY:

STANDARD NETWORK PRINT:

Controller:	Embedded PowerPC750FL / 600 MHz Controller
Printer Memory:	Shared System Memory
Supported PDL/Emulations:	PRESCRIBE, PCL6 (PCL XL, PCL 5e), KPDL3 (PS3), KCGL (HP-GL/2), Diablo 630, IBM ProPrinter X24, Epson LQ850, Line Printer
Fonts:	80 Outline Fonts for PCL XL/5e, 136 Outline Fonts for KPDL3, 1 Bitmap Font
Windows® OS Compatibility:	Windows® 95/98/Me/NT4.x/2000/XP/2003/Vista
Novell® OS Compatibility:	Novell NetWare® 3.x/4.x/5.x/6.x
Mac OS Compatibility:	OS 10.x
UNIX OS Compatibility:	Sun OS 4.1.x; Solaris 2.x; AIX, HP-UX (LPR)
Connectivity / Interface:	Standard 10/100BaseTX, Parallel IEEE1284, High Speed USB 2.0
Host Interface (3):	Full Speed USB 2.0
Expansion Slots (2):	Optional Fax System
Supported Protocols:	TCP/IP, IPX/SPX, AppleTalk, NetBEUI
Drivers:	KX Driver for Windows®, PPD for Mac, PPD for Linux/UNIX, Certified Uni Driver, Windows®
Utilities:	KMnet Admin, KM-NET Viewer, KM-NET for Clients, PDF Direct Print, Kyocera Command Center
Additional Print Features:	Private Printing, Print Job Storage

STANDARD COLOR NETWORK SCAN:

Scan Mode:	Color and Monochrome Scanning
Resolution:	200, 300, 400, 600 DPI
Scan Speed:	50 Originals per Minute (Monochrome); 25 Originals per Minute (Color)
File Formats:	Monochrome: PDF, TIFF; Color: PDF, JPG, TIFF
Connectivity:	10/100BaseTX
Supported Protocols:	TCP/IP
Scanning Functions:	Scan to Folder (SMB), Scan to e-Mail, Scan to FTP, TWAIN
Driver:	TWAIN Driver
Utilities:	Kyocera Command Center
Additional Scan Features:	Consolidated Address Book, Multi-Send, LDAP, Job Finish Notice, Long Scan Mode, File Separation, File Name Entry, e-Mail Subject/Body Entry, Secure Print, Scan and Store

Fax/NETWORK Fax/Internet Fax FAX SYSTEM (M)

Compatibility:	Super G3
Quick Scan Speed:	1.2 SPP
Transmission Speed:	Approximately 3 Seconds per page
Modem Speed:	33.6 Kbps with Auto Fallback
Data Compression:	JBIG, MMR, MR, MH
Fax Image Modes:	Normal, Fine, Super Fine, Ultra Fine
Fax Memory:	Shared System Memory
Driver:	KM Network Fax Driver
Utilities:	Kyocera Command Center
Additional Fax Features:	Multi-Send, Consolidated Address Book, Duplex TX/RX, Confidential RX/TX, F-Code RX/TX, Broadcasting, Fax Box, Dual Fax

ADDITIONAL OPTIONS:

iTag, KYOCapture Express, Data Security Kit (C), Job Separator (JS-700), Fax Backup Kit (BU-10), PDF Enhancement Kit (UG-30), Finisher Attachment Kit (AK-700), 512MB Memory Board, Copy Stand



Specifications and design are subject to change without notice. All trademarks are the property of their respective owners.

Kyocera Mita America, Inc. Headquarters: 225 Sand Road, PO Box 40008, Fairfield, NJ 07004-0008, USA
© 2008 Kyocera Mita America, Inc.

Item Code # 85D400029



www.kyoceramita.com